

Name _____

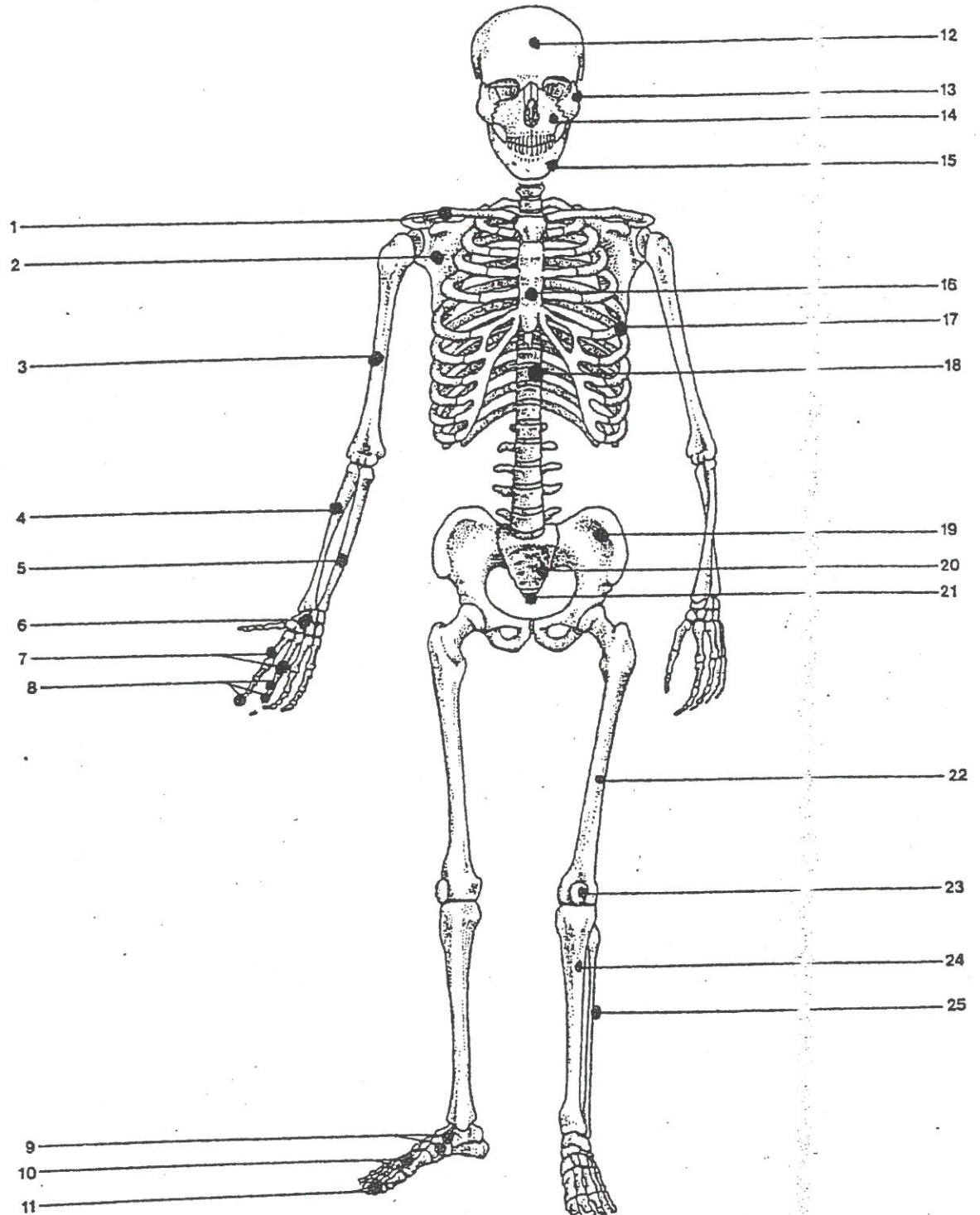
Per. _____

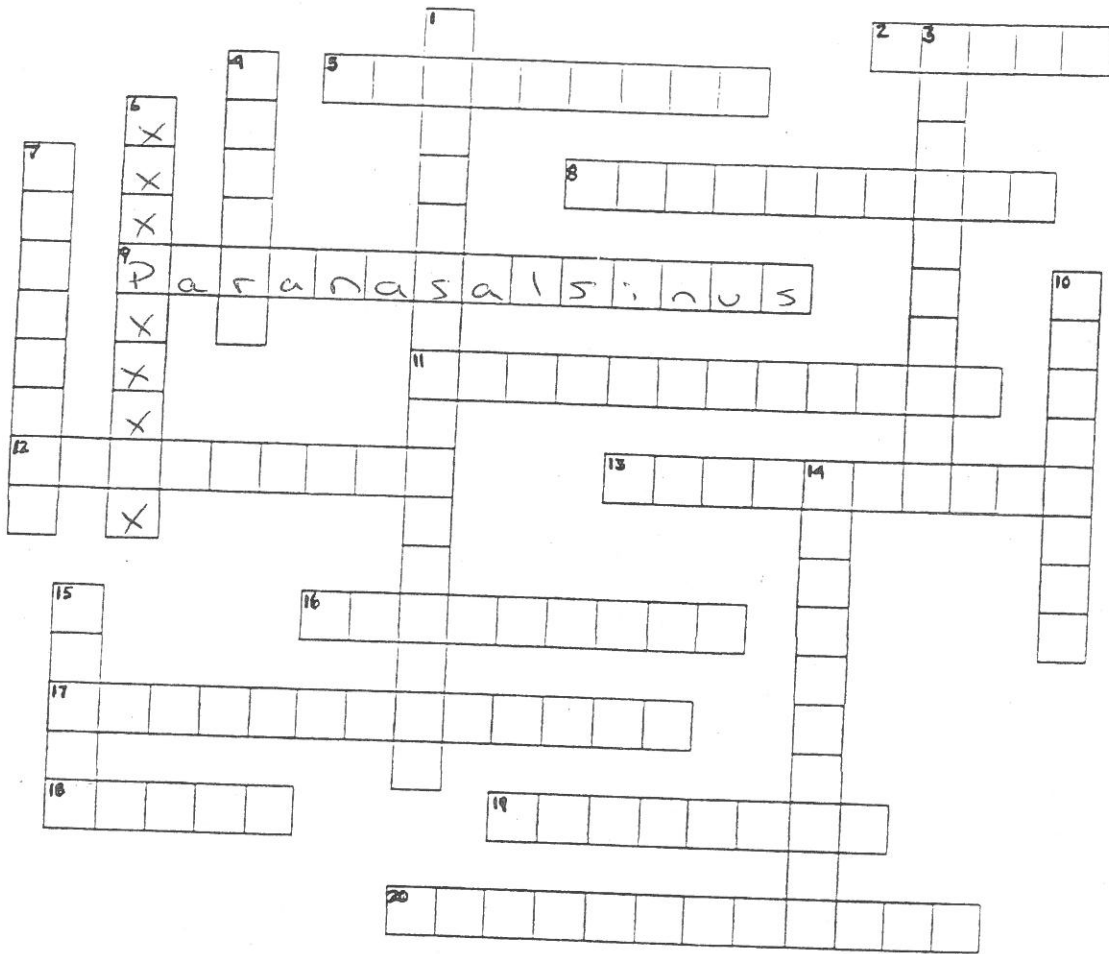
WS6.2

p. 97-125

Following is a diagram of the full skeleton.

Label the bones indicated.





ACROSS

- 2. where two bones meet] P. 99
- 5. shaft of a long bone
- 8. the disc at which the growth of a long bone takes place
- ~~X~~ air cavity that opens into nasal cavity (two words)
- 11. division of the skeleton: within the arms and legs (P 105)
- 12. end of a long bone
- 13. anchors tendons and ligaments (Bone Part) P. 98
- 16. cartilage that is smooth; on joint surfaces
- 17. produces red blood cells (three words)
- 18. division of the skeleton that includes the vertebrae
- 19. fluid that prevents friction as the bones move
- 20. production of bone matrix

DOWN

- 1. compact bone is made of _____ (two words)
- 3. produces bone matrix
- 4. immovable joint between cranial bones
- ~~X~~ type of joint with a disc of fibrous cartilage between two bones
- 7. "soft spot" in an infant's skull
- 10. connects one bone to another bone
- 14. reabsorbs bone matrix
- 15. sac of synovial fluid between a joint and tendons P. 102