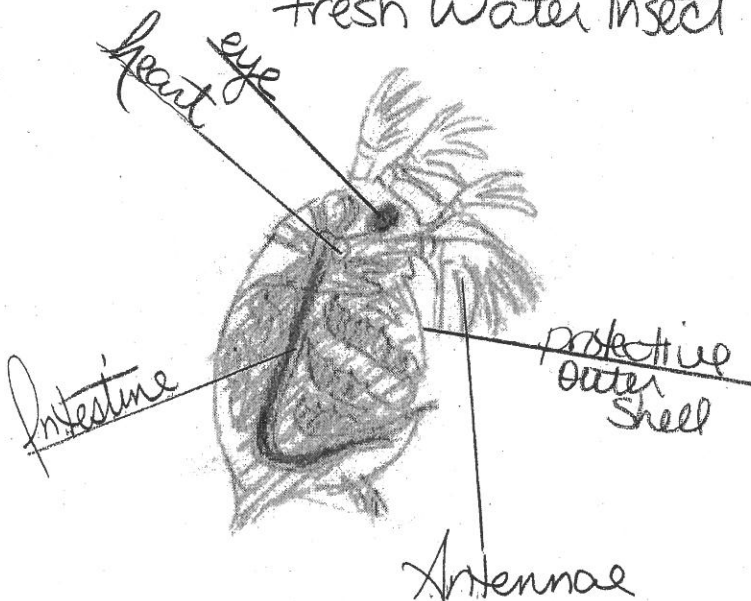


GENERAL TIPS FOR BIOLOGICAL DRAWINGS

1. Title your drawing as specific as possible
2. Begin with a pencil and a good eraser.
3. Draw lines lightly at first, then darken the lines making smooth lines on your drawing. This is not a sketch!
4. Label your drawing using a straight edge making sure all label lines are parallel and do not cross
(as if you had a piece of notebook paper behind your drawing paper)
5. Labels should be PRINTED, do not write them in cursive
6. Spelling MUST be correct. Incorrect spelling affects your grade.
7. Draw what you see, not what you think it should look like!
8. Your grade is based on effort so pay close attention to detail as your draw.
9. Once you are satisfied with your drawing, add color. Color is required and helps distinguish separate organs or structures.

INCORRECT

Fresh Water Insect



CORRECT

WATER FLEA

Daphnia ambigua

